

COMPANY PROFILE

NAME OF COMPANY

PT. NIRVANA BUANA INTRADE

INTERNATIONAL TRADE

LIST OF CONTENTS

- 1. COMPANY PROFILE**
- 2. LEGAL ASPECTS**
- 3. ORGANIZATION STRUCTURE**
- 4. ORGANIZATION CHART**
- 5. PRODUCT LIST**
- 6. COMPANY LEGAL DOCUMENTS**

COMPANY PROFILE

NAME OF COMPANY

PT. NIRVANA BUANA INTRADE

ADDRESSES

**RUKO BOULEVARD HIJAU BLOK B1/32
KEL. PEJUANG KEC. MEDAN Satria
KOTA BEKASI**

BOARD OF COMMISSIONER AND DIRECTOR

COMMISSIONER

STEVE BRYAN LEE

PRESIDENT DIRECTOR

ANDI GUNAWAN

DIRECTOR

STEVANI IN IN

**ESTABLISHED
18 JANUARY 2008**

BANK AND ADDRESS

PT. BANK CENTRAL ASIA. TBK

**JUANDA BEKASI BRANCH
JL. IR. JUANDA NO. 54 BEKASI 17113**

**ACCOUNT NO : 066 301 6919 (IDR)
 066 301 6927 (USD)**

ACCOUNT NAME : PT. NIRVANA BUANA INTRADE

2. LEGAL ASPECT

❖ GENERAL

THE COMPANY WAS ESTABLISHED, UNDER NOTARIAL DEED NO : 02 OF Mrs. YOVITA LUMBAN TOBING, SH. DATE : JANUARY 18, 2008 AT BEKASI

❖ SURAT KETERANGAN DOMISILI

THE COMPANY IS DOMICILED AT : RUKO BOULEVARD HIJAU BLOK B1/32 KEL. PEJUANG KEC. MEDAN SATRIA KOTA BEKASI. AS STATED IN THE LETTER OF LURAH PEJUANG.

❖ TANDA DAFTAR PERUSAHAAN

OBTAINED FROM TRADE DEPARTMENT OF REPUBLIK INDONESIA. WITH REGISTRATION NO : 102615205122 DATE 13 MARCH 2008.

❖ SURAT IJIN USAHA PERDAGANGAN (SIUP)

OBTAINED FROM TRADE DEPARTMENT OF REPUBLIK INDONESIA.

NO. 501/47-PERINDA PB/II/2008. DATE ; 020 FEBRUARY 2008.

❖ PENGESAHAN BADAN HUKUM PERSEROAN

OBTAINED FROM MENTERI HUKUM DAN HAK ASASI MANUSIA REPUBLIK INDONESIA. NO : AHU-0014619-AH.01.09. DATE : 28 FEBRUARY 2008.

❖ NPWP

OBTAIN FROM

: TAX DIRECTORATE GENERAL

NPWP

: 21.024.522.1-407.000

LEGITIMATION NO

: PEM.0000429 ER /WPJ.22
/KP.0103 /2008

ORGANIZATION STRUCURE

COMMISSIONER

STEVE BRYAN LEE

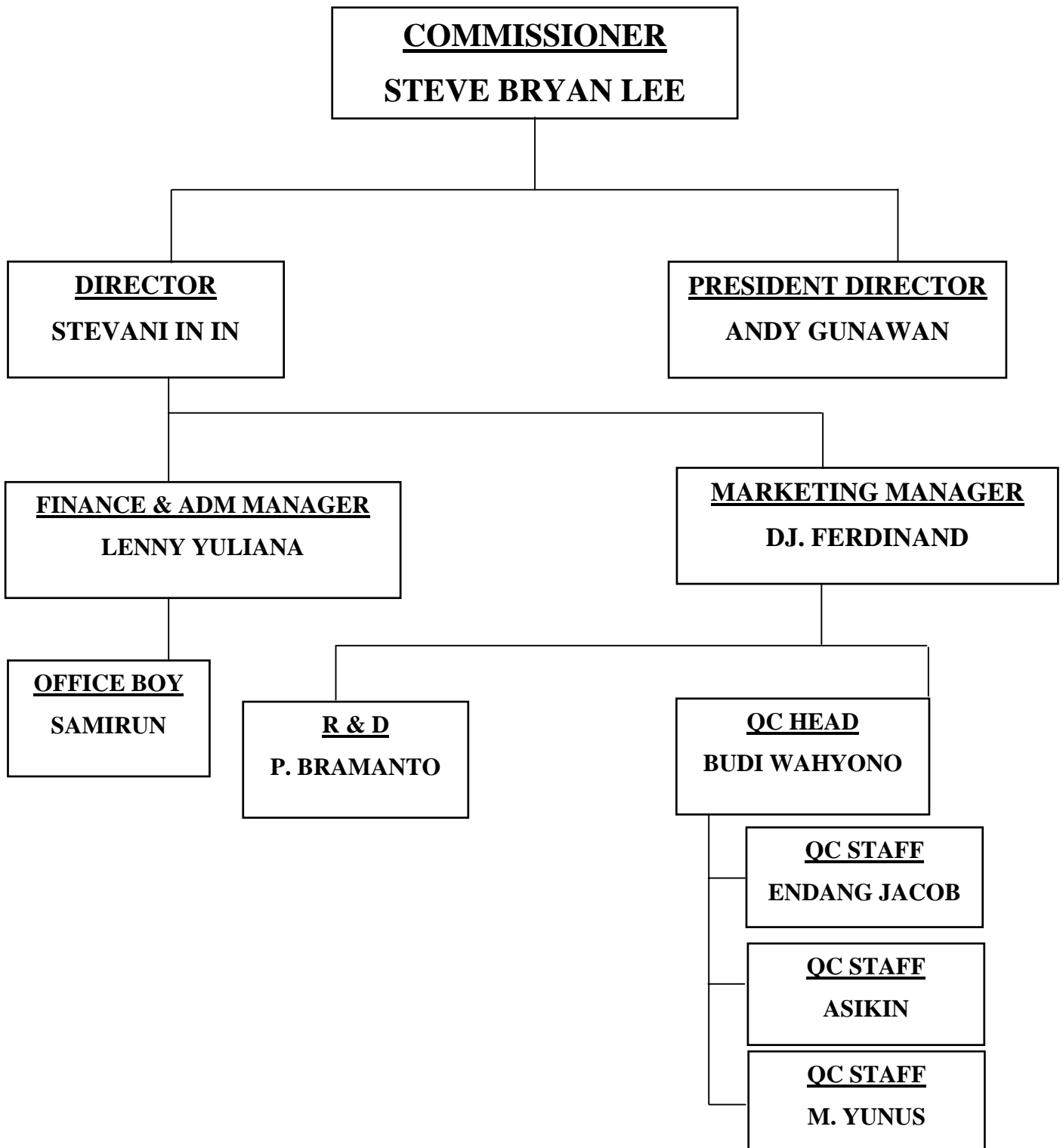
PRESIDENT DIRECTOR

ANDI GUNAWAN

DIRECTOR

STEVANI IN IN

ORGANIZATION STRUCURE



5. PRODUCT LIST

- FURNITURE**
- WOODENT PRODUCT**
- HANDYCRAFT**
- CONFECTIONARY**
- MAINTENANCE CHEMICAL**
- TYRE**